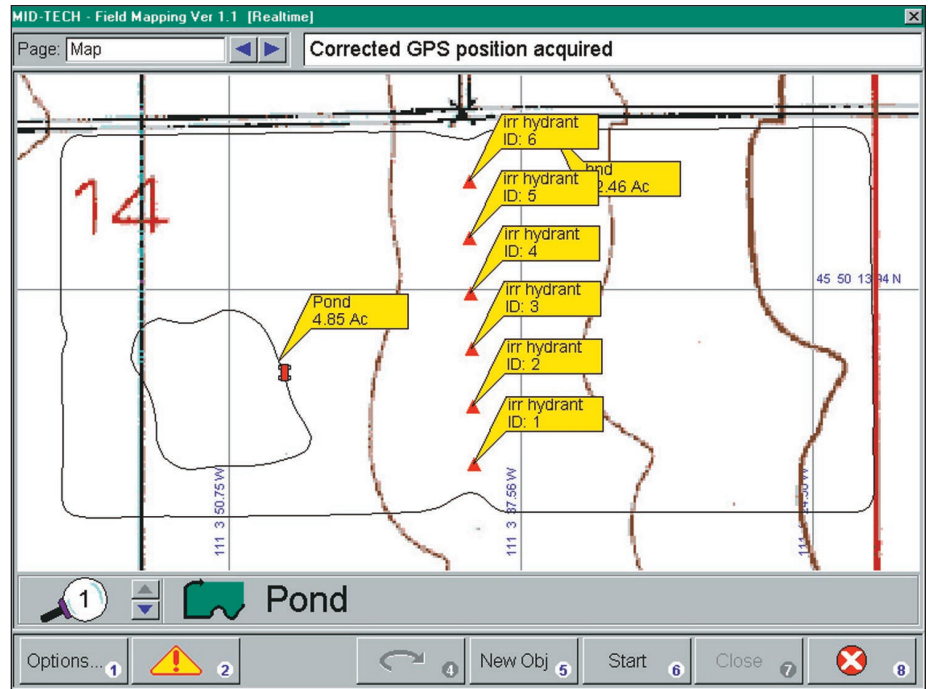


Fieldware™

The Next Level of Farm and Field Management

FEATURES

- One software program applies to many tasks
- Runs on most laptops
- Maps any combination of points, lines and polygons
- Grids field for soil sampling
- Works with Swath XL lightbar
- Displays USGS or regional maps in the background
- Warns operator of approaching hazard
- Permits variable rate application



Fieldware software provides a complete set of tools to map fields, collect soil data, guide machines, control a variable rate application, and move data into a Geographic Information System (GIS). Install the Fieldware software on a portable computer, connect a differential Global Positioning System (DGPS) receiver to it, and you are ready to go. Fieldware software is available as Fieldware Mapping or Fieldware Suite.

Fieldware Mapping Field Mapping & Grid Soil Sampling

Mapping the field boundaries and features is often the first step in a precision ag program. Fieldware lets you —

- Map field boundaries accurate to 0.01 acres
- Display distances as you drive
- Map polygons, lines, or points in any combination

- Map navigation hazards to warn an operator later when running guidance
- Display a US Geological Survey quad map or regional road map in the background
- Export map data directly to compatible GIS packages or in "Shape File" format (ESRI SHP)

Fieldware will grid a field into a square or rectangular pattern and then navigate you to a point in each grid cell to collect a soil sample. Points can be centered, unaligned or randomly placed in each grid.

Application Rate Management

Variable rate application of products can be done with Application Rate Management, or ARM. A field prescription map or file, developed with an office GIS software, is loaded into the field computer in advance. In this module, a laptop with two COM ports connects with a DGPS receiver and a rate controller. The laptop receives GPS data, send rates to the control system, verifies and records the products applied, their rates and location. Fieldware ARM will—

- Monitor the target and application rate of products

- Create an "as applied" map for the product applied
- Operate with or without a Mid-Tech lightbar for guidance
- Automatically send a zero rate to the controller if you enter an area already covered

Works with Swath XL

Connect Mid-Tech's Swath XL lightbar to your laptop and you have a parallel swath guidance system; that will guide you and create a record map of where products have been applied. Swath lets you—

- Drive lines in any order and any direction
- Establish more than one set of guidelines in a field and toggle between sets
- Create a field boundary while applying if one is not available
- See a map of the field and watch your progress

Continued on other side



Fieldware

The Next Level of Farm and Field Management



- Get a “where-applied” record map when you are done
- Be alerted to an approaching hazard with a visible warning flash

Available in a future upgrade—

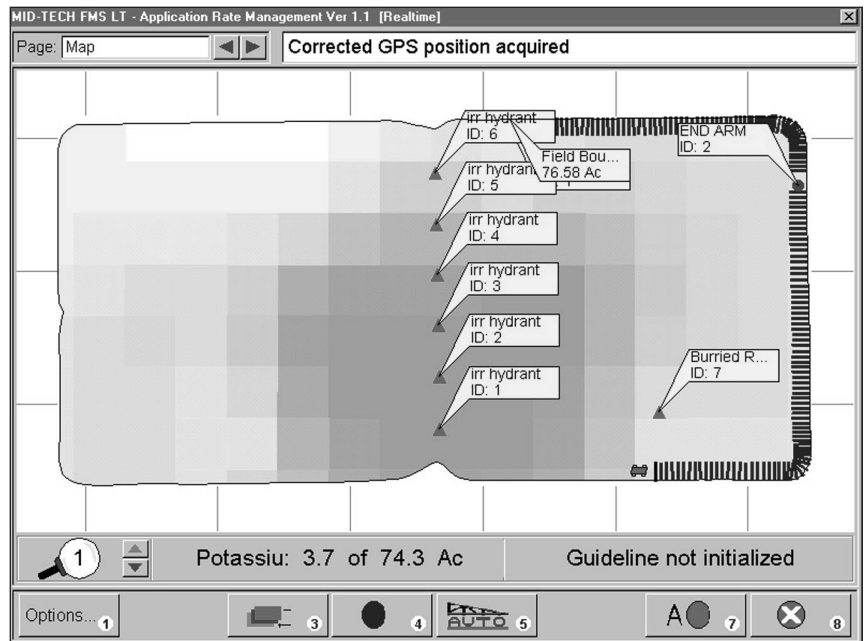
- Run guidance in pivot-irrigated fields
- Curve guidance

Exploit the power of a GIS

Fieldware record file data can be imported into most common GIS office software packages where they can be layered with other geo-referenced data. Using the Mid-Tech Map Manager Utility that is included in all the Fieldware modules, you can display combinations of data files.

Technical Support & Warranty

Mid-Tech provides detailed manuals on software operation. Additional technical support is simply a phone call away. Installation and on-site training are available by arrangement with Mid-Tech.



Fieldware's Application Rate Management
This screen view shows how rates will change across a field by gradated color. Areas where nothing will be applied appear white.

MINIMUM COMPUTER SYSTEM REQUIREMENTS

Mobile computer	90 Mhz processor
RAM	16 Megabytes of RAM
Hard Drive	20 Megabytes of free space
Mapping and Guidance	One RS-232 port
Rate Control	A second RS-232 port
Parallel Port	For lightbar
Operating Systems	Windows® '95 , '98 or 2000

RECOMMENDATIONS FOR OPTIMAL PERFORMANCE

Mobile Computer	Faster than 90Mhz processor
RAM	32 Megabytes of RAM
Hard Drive	100 Megabytes of free disk space
Display	Bright color display that can be viewed in daylight

GPS RECEIVER, RATE CONTROLLER, GIS INTERFACE

GPS Receiver

Mid-Tech's RX 100p, RX 400p, or other sub-meter differential GPS receiver with RS-232 NMEA output. A GPS receiver with 2 Hz or faster position update rate is required for guidance.

Rate Controllers

Compatible with most available electronic rate controllers. Requires a computer that can be configured with two COM ports.

GIS Interfaces

Compatible with most GIS office software for agriculture. The Map Manager tool, included with all modules, exports to, and imports from, "Shape file" format. Call today for specific GIS reference information.

Mid-Tech reserves the right to make changes at any time without notice.

© Mid-Tech is a registered trademark of Midwest Technologies, USA.
© Windows is a registered trademark of Microsoft Corporation, USA.



Midwest Technologies IL, L.L.C.
2733 E. Ash Street • Springfield, IL 62703
217-753-8424 • www.mid-tech.com
800-643-8324