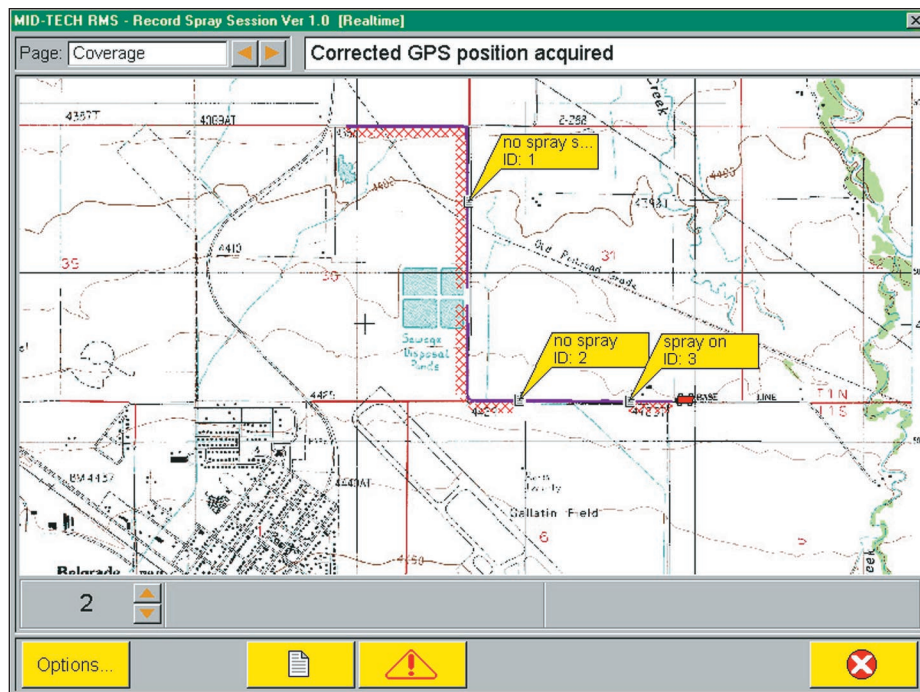


Roadway Management System

The Next Level of Roadway Vegetation Management

FEATURES

- Record the placement of multiple chemicals or chemical mixtures accurately on-the-go
- Precisely map targeted roadways before spraying—including sensitive areas and infestations
- Organize operations with RMS' easy-to-manage database
- Get consistent mixtures of chemicals every time with the Chemical Calculator
- See maps of area sprayed on-the-go
- Generate detailed reports from collected data
- Place background maps for reference
- Manage data in a GIS



Take your hard work and management efforts a full leap ahead by recording your management plan in georeferenced maps with Mid-Tech's new RMS software. The Roadway Management System records essential information about your work and notes exactly where it was done using GPS (Global Positioning System) positions. RMS software uses published non-proprietary file formats, keeping the architecture open to most common GIS (Geographic Information System) software and quality GPS receivers.

A Framework for Organization

The process begins by inputting information into the RMS databases, or profiles—personnel, the configuration of your truck or fleet, chemicals and chemical mixtures. This is easily done in the office ahead of time. Once the set-up is complete, it becomes part of the system files for ready reference. When it's time to conduct your

spraying operation, database files are transferred to the MC-1000, Mid-Tech's on-board mobile computer and rugged task controller.

As with most tasks, the more time you invest in preparation, the more you will get out of it in efficiency. Pre-mission mapping can be conducted to mark hazardous areas, environmentally sensitive spots and particularly damaging infestations. When approaching these same areas in successive seasons, you will be warned in advance of your approach.

This Year Record Your Routes

Data transmitted from Mid-Tech's series of injection control systems is combined with GPS positions to generate a real-time, "moving map" display of the application. When you turn the spray arm on, a brightly-colored track of where you sprayed appears on the MC-1000's daylight-readable display. Simultaneously, permanent records of the application are stored on the MC-1000 hard disk.

These record files indicate exactly where each chemical was applied, the volume applied, total area, total distance, as well

as actual & target rates. Events are added to the record automatically, such as when a console switch position is changed, or manually, when the operator wants to mark a location or occurrence. Skips are evident on the display immediately and can be remedied before you leave the area (without the use of dyes or colorants).

Improved Consistency

The Chemical Calculator allows the concentration of one or more liquid or dry chemicals in a tank mixture to be specified and saved in the chemical mixture database. Once this is done, the mix can be consistently reproduced because the Calculator provides the exact quantities needed for any volume of the mixture.

Put Yourself on the Map

US Geological Survey quad maps or regional road data can serve as a background reference. Any work that's done

Continued on other side



Roadway Management System

The Next Level of Roadway Vegetation Management



can be displayed on top of a reference map, both in the cab and back in the office.

Create your own background maps with *RMS Mapper*. This program allows you to map any or all of the routes in your region very accurately, marking sensitive or "no spray" locations as you drive. When you enter the area again, these appear as bright red flags on the RMS real-time display and as you approach you are warned with audible and visible alarms.

Report Generation

When the day's job is done, download the files you made to a PC card and bring them to your office where they become a permanent record and proof of what was done. The RMS utilities make it possible to generate a variety of reports, from basic maps of application areas to customized detailed reports of your crew's work. Even digital photos can be placed in reports for a visual record.

Exploit the Power of a GIS

RMS record file data can be imported into most common GIS software packages where they can be layered with other georeferenced data. Using your GIS, or the Mid-Tech Map Manager Utility, you can zoom in on any part of the application. On a waterway, for instance, you can zoom in as close as necessary to see where you quit applying chemical and where you began again.

Next Year Spray Smarter

Last year's data will provide valuable information. Are you putting thousands of dollars worth of chemical on the same infestation year after year? When returning to the same area, you can refer to the original files and modify your plans with different chemicals and concentrations as needed.

Technical Support & Warranty

Mid-Tech provides detailed manuals on software operation. Additional technical support is simply a phone call away. Support

REQUIRED EQUIPMENT

Computer System Requirements for RMS software

Mid-Tech MC-1000 (Windows™ 98 operating system)

GPS Receiver

Mid-Tech's RX 100p, RX 200p, or any other sub-meter GPS receiver with RS-232 NMEA output

Rate Controllers

Mid-Tech TASC Series with the Mid-Tech DataLink

Media






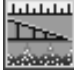
Available on CD ROM or diskettes

GIS Interfaces

Export to a shape file only
ESRI Arc View
Map Info

Please call and ask about the GIS software you are using

PROFILES OF INFORMATION

Profiles for	Contain easy-to-access information on
 Agency	The agency & division contracting your spraying services.
 Chemical	Chemicals most commonly used in a spraying application including the manufacturer, EPA number, commodity code and more.
 Chemical Mixture	Most common chemical tank mixes used in a spraying application. This includes a handy chemical calculator that allows you to input a volume or distance and determine the amount of material needed to load.
 Personnel	Vehicle drivers and operators, including employee ID, Pesticide License number, and other pertinent information.
 Vehicle	Spray configuration of each vehicle in your fleet detailing the controller, the number of tanks and pumps and if you are measuring in gallons or liters.
 Spray Configuration	Boom set-up with section-by-section details, as well as hand gun configuration.

Mid-Tech reserves the right to make changes at any time without notice.

MID-TECH AUTHORIZED DEALER



Midwest Technologies, Inc.
2733 E. Ash Street • Springfield, IL 62703
217-753-8424 • www.mid-tech.com
800-643-8324